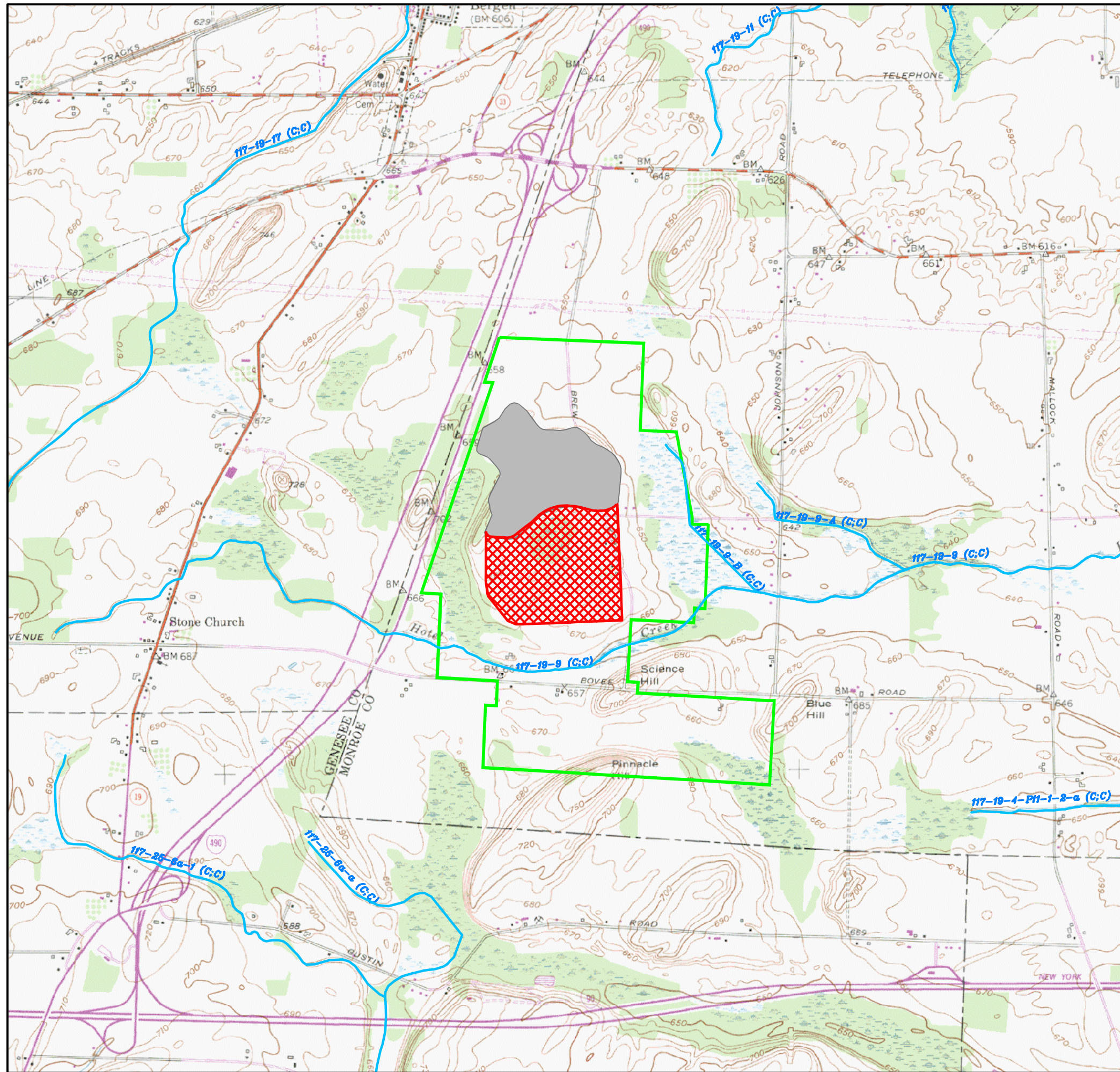


Plotted: Mar 24, 2015 - 9:47AM SYR By: bkp  
 i:\Shared\1200\1242022\DSEIS FIGURES\DECEMBER 2014 DEIS FIGURES\1242022\_FIG 16\_STREAM\_LOC.dwg



- GENERAL NOTE:**
1. MAP SOURCE: USGS QUADRANGLES CHURCHVILLE.
  2. ALL TRIBUTARIES ARE OF THE LAKE ONTARIO BASIN SERIES.
  3. ALL DRAINAGE TRIBUTARIES ARE IN ACCORDANCE WITH NYCRR TITLE 6, CHAPTER 10, PART 701 CLASSIFICATION AND STANDARD OF QUALITIES.
  4. REFER TO HYDROGEOLOGIC INVESTIGATION FOR A DETERMINATION OF PRIMARY AND PRINCIPAL AQUIFER LOCATIONS.

**STREAM NOTE:**  
 THE OUTLINE BELOW IS INTENDED TO SHOW HOW WATERS INDEX NUMBERS ARE ASSIGNED TO EACH WATER BODY. IN EACH DRAINAGE BASIN, THE FIRST NAME OR LETTERING ABBREVIATION LISTED IS THE PRIMARY WATER BODY. TRIBUTARIES OF PRIMARY WATERS ARE CONSECUTIVELY NUMBERED, PROGRESSING UPSTREAM FROM THE MOUTH. WITHIN THE WATERS INDEX NUMBER, EACH SUCCESSIVE WATER BODY LISTED TO THE RIGHT OF THE PRIMARY WATER BODY IS A TRIBUTARY TO THE PRECEDING WATER BODY (E.G. HOTEL CREEK IS A TRIBUTARY TO BLACK CREEK, WHICH IS A TRIBUTARY TO THE GENESEE RIVER, ETC.).

**STREAM IDENTIFICATION KEY**

**UPPER GENESEE RIVER DRAINAGE BASIN**

**WATER BODY NAMES**

- Ont. 117 GENESEE RIVER
- 19 BLACK CREEK
  - 4 MILL CREEK
  - P11 BLUE POND
  - 1 BLUE POND INLET
  - 2 UNNAMED TRIBUTARY TO BLUE POND INLET
  - a UNNAMED SUBTRIBUTARY TO BLUE POND INLET
  - 9 HOTEL CREEK
  - A UNNAMED TRIBUTARY TO HOTEL CREEK
  - B UNNAMED TRIBUTARY TO HOTEL CREEK
  - 11 UNNAMED TRIBUTARY TO BLACK CREEK
  - 17 UNNAMED TRIBUTARY TO BLACK CREEK
  - 25 OATKA CREEK
  - 6A UNNAMED TRIBUTARY TO OATKA CREEK
  - a UNNAMED SUBTRIBUTARY TO OATKA CREEK
  - 1 UNNAMED SUBTRIBUTARY TO OATKA CREEK

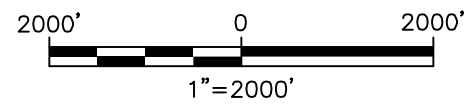
**STREAM CLASSIFICATIONS**

(C; C)  
 C - STREAM CLASS  
 C (C) - STANDARD OF QUALITY AND PURITY

BASIN | STREAM/TRIBUTARY  
 Ont. 117-19-(C;C) — CLASSIFICATION

**SOURCE:**  
 THE WATERS INDEX NUMBERS, STREAM CLASSIFICATIONS, AND STANDARDS FOR THE UPPER GENESEE DRAINAGE BASIN WERE OBTAINED FROM 6 NYCRR PART 821 (AMENDED 10/15/97).

- LEGEND:**
- PROPOSED FOOTPRINT
  - PERMITTED FOOTPRINT
  - PROPOSED SITE
  - MAPPED CREEK OR STREAM
  - ROAD/HIGHWAY
  - RESIDENCE/STRUCTURE
  - EXISTING CONTOUR



MILL SEAT LANDFILL  
 PROPOSED LANDFILL EXPANSION DSEIS  
 STREAM LOCATION AND CLASSIFICATION MAP  
 MONROE COUNTY, NEW YORK  
 TOWN OF RIGA



Date	APRIL, 2015
Scale	1"=2000'
Figure Number	16
Project Number	1242.022